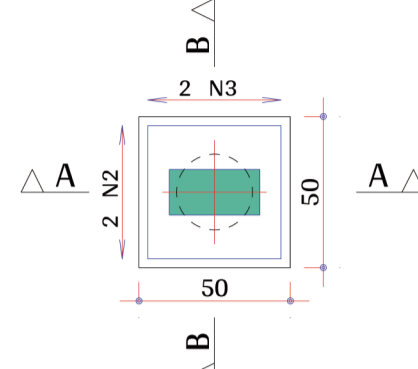


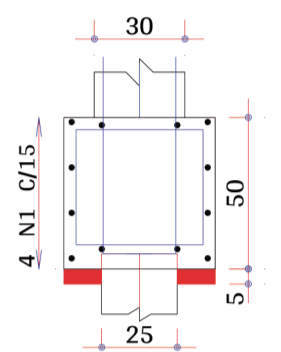
B1
(ESCALA 1:25)

PLANTA

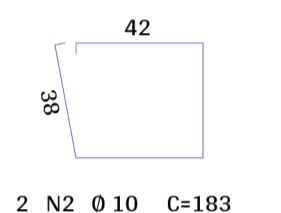
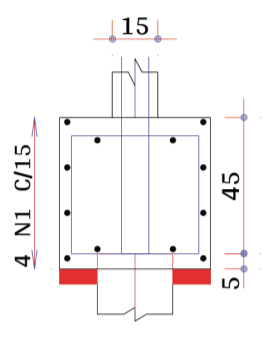


4 N1 Ø 5 C/15 C=191

CORTE A - A



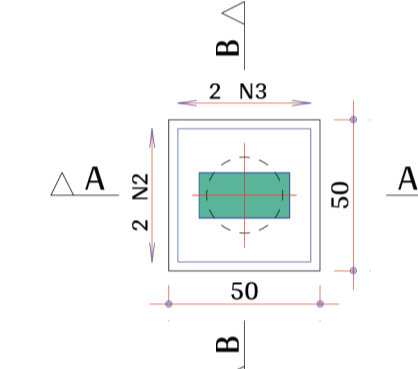
CORTE B - B



2 N2 Ø 10 C=183

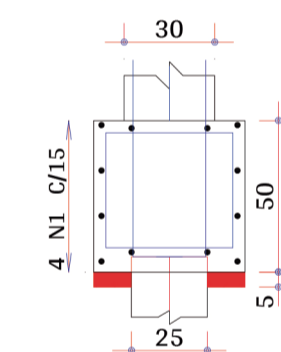
B3
(ESCALA 1:25)

PLANTA

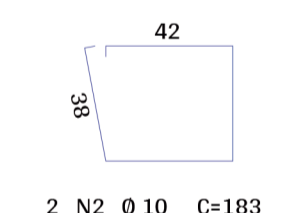
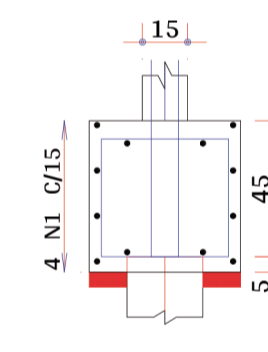


4 N1 Ø 5 C/15 C=191

CORTE A - A



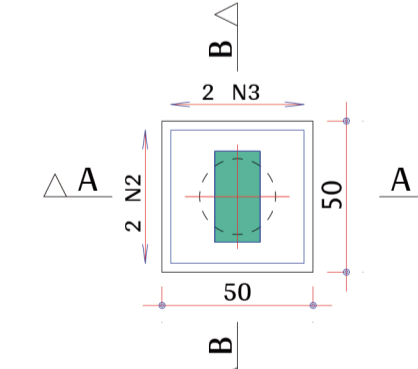
CORTE B - B



2 N2 Ø 10 C=183

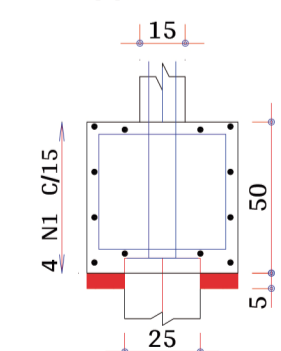
B5
(ESCALA 1:25)

PLANTA

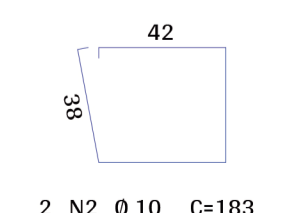
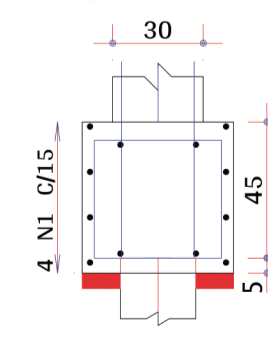


4 N1 Ø 5 C/15 C=191

CORTE A - A



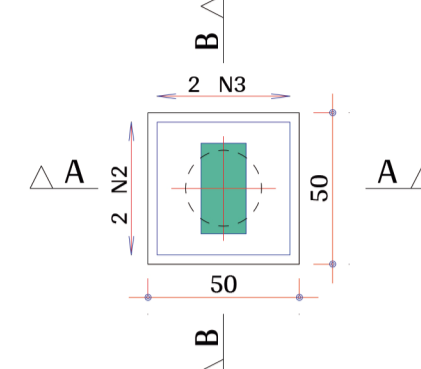
CORTE B - B



2 N2 Ø 10 C=183

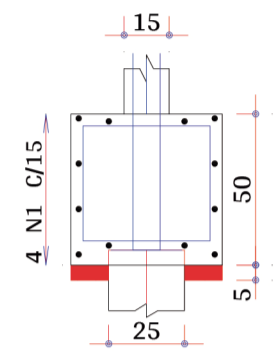
B2
(ESCALA 1:25)

PLANTA

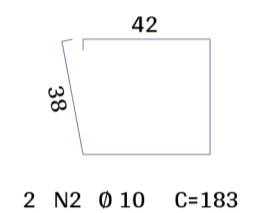
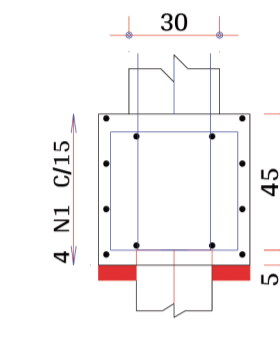


4 N1 Ø 5 C/15 C=191

CORTE A - A



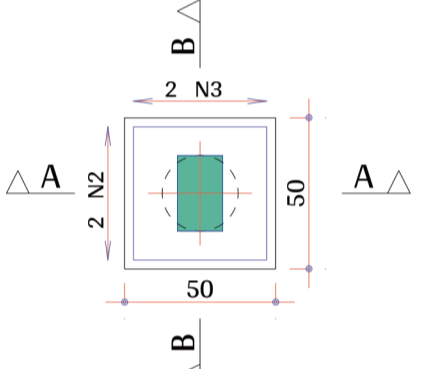
CORTE B - B



2 N2 Ø 10 C=183

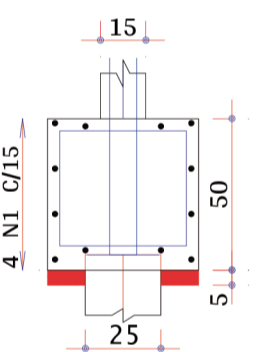
B4
(ESCALA 1:25)

PLANTA

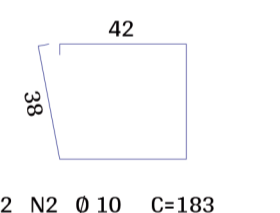
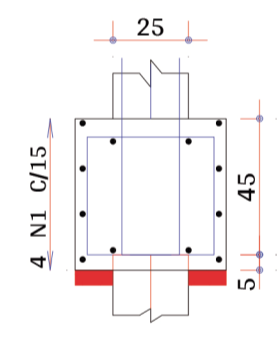


4 N1 Ø 5 C/15 C=191

CORTE A - A



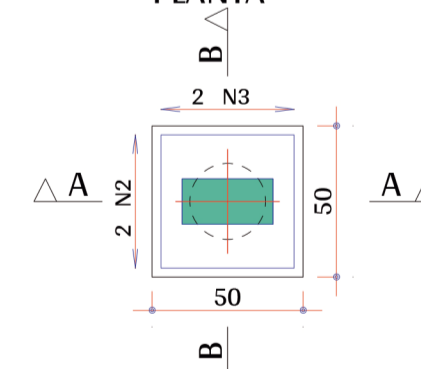
CORTE B - B



2 N2 Ø 10 C=183

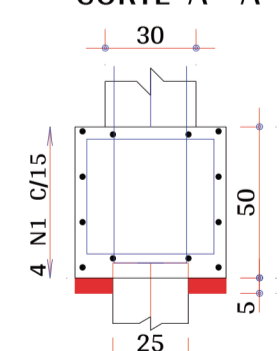
B6
(ESCALA 1:25)

PLANTA

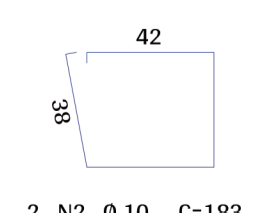
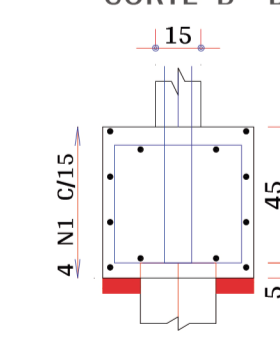


4 N1 Ø 5 C/15 C=191

CORTE A - A

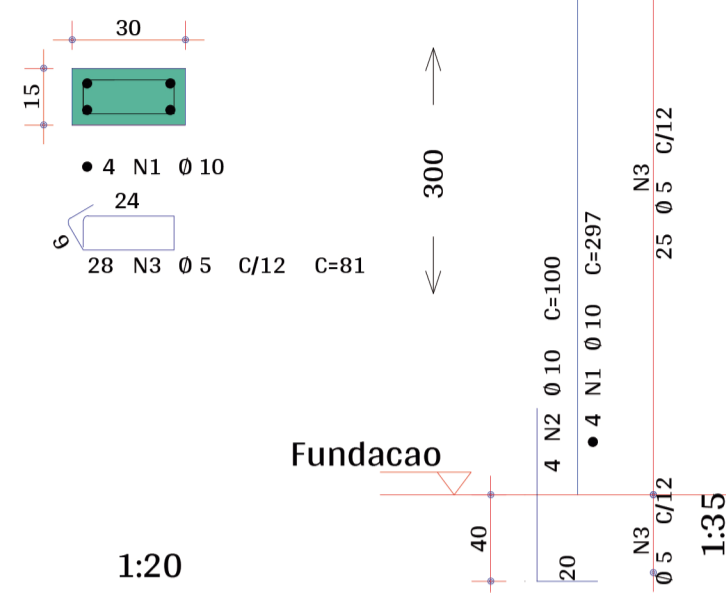


CORTE B - B



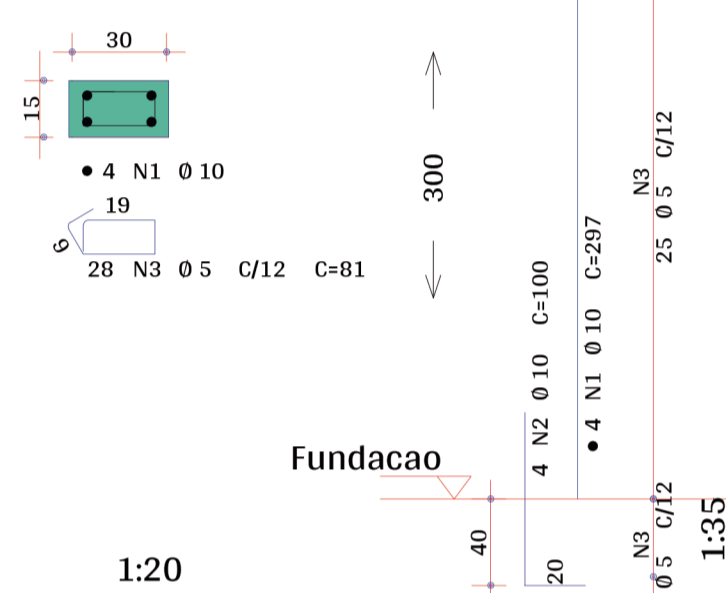
2 N2 Ø 10 C=183

P1 Lance 1
Primeiro



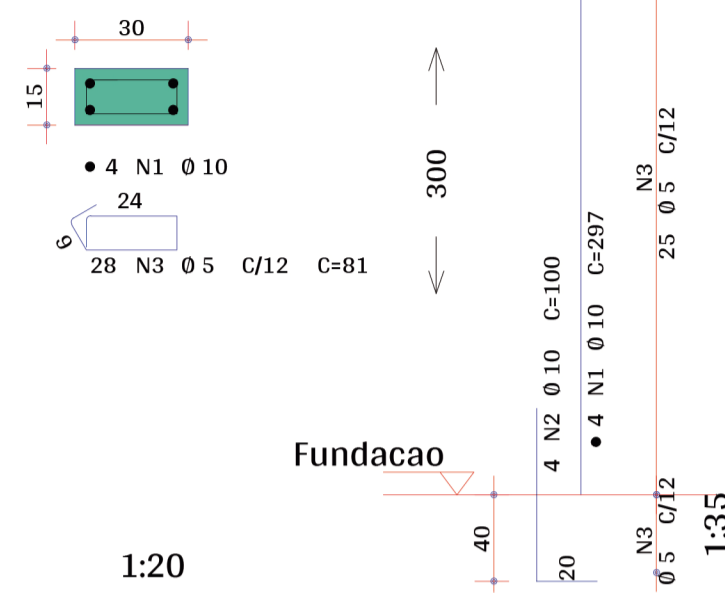
1:20

P4 Lance 1
Primeiro



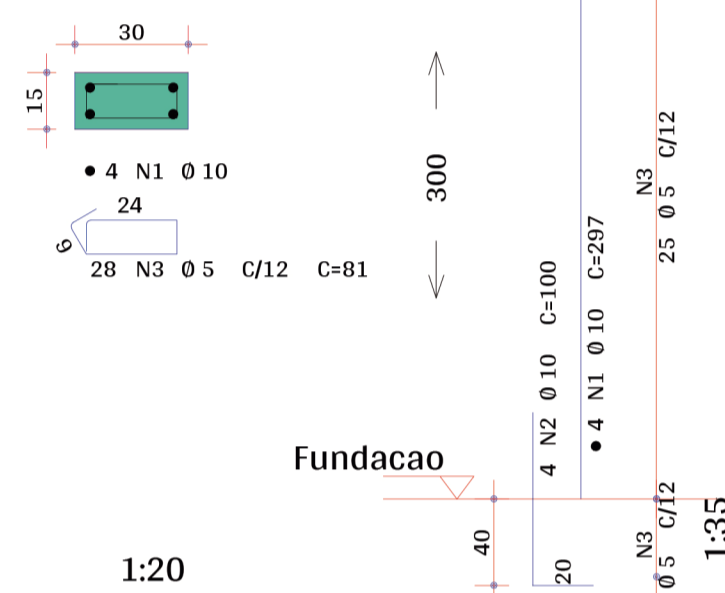
1:20

P2 Lance 1
Primeiro



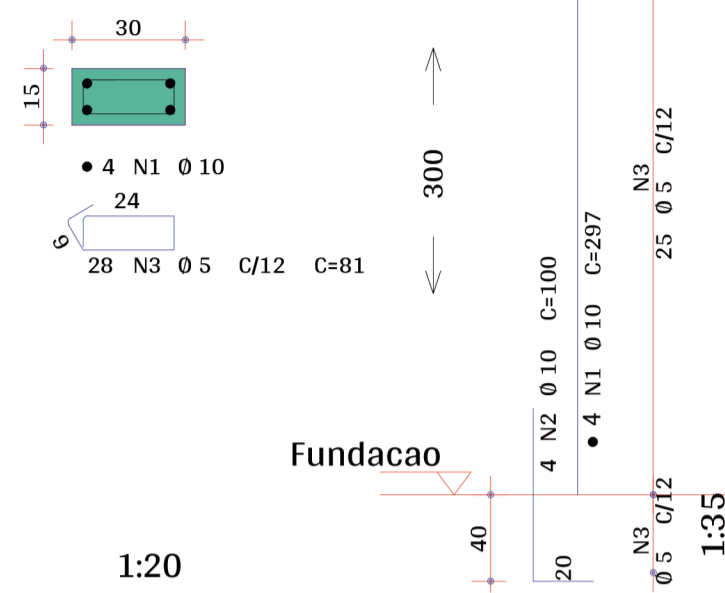
1:20

P5 Lance 1
Primeiro



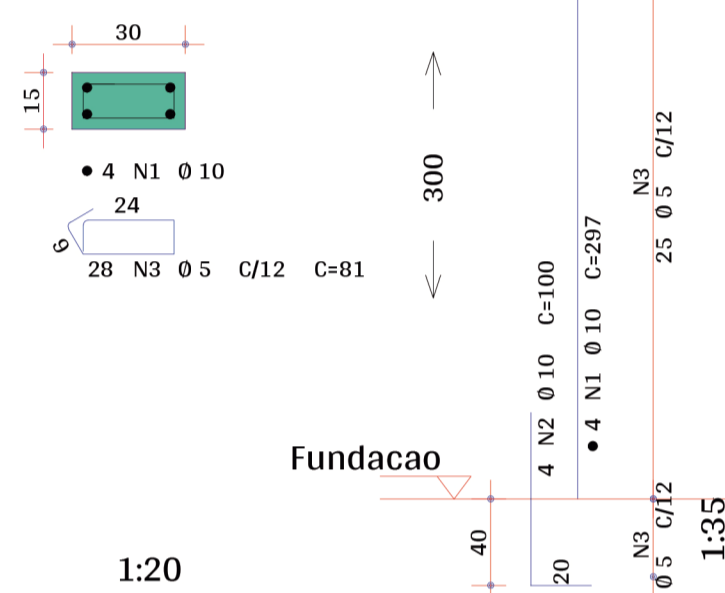
1:20

P3 Lance 1
Primeiro

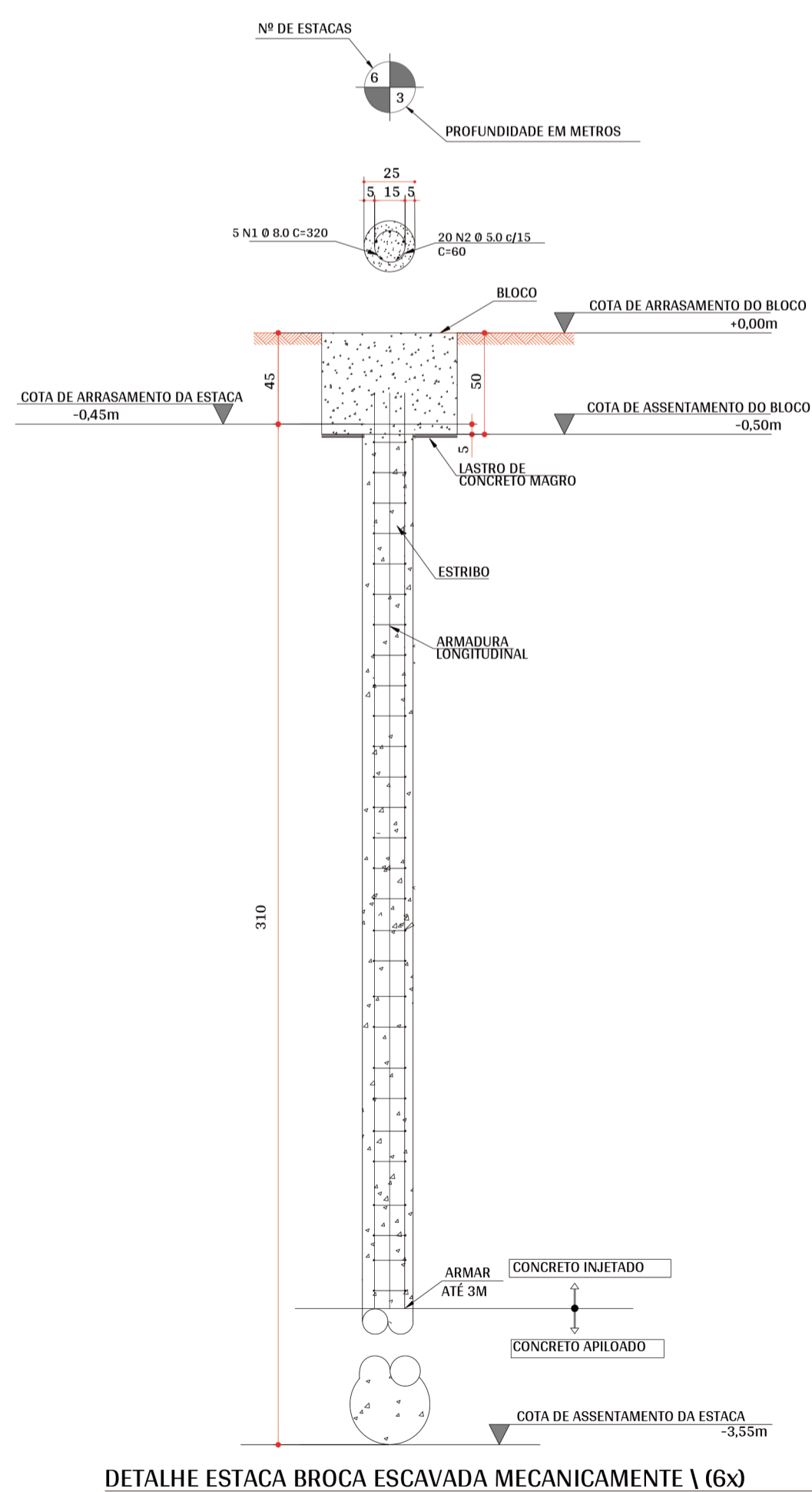


1:20

P6 Lance 1
Primeiro



1:20



DETALHE ESTACA BROCA ESCAVADA MECANICAMENTE \ (6x)

Rafael Amancio
Daniele Stephany Domingues Bernardes
CREA: 506974580/SP
ART: 28027230221870753
Responsável Técnico do Convênio

Rafael Amancio
RESPONSÁVEL TÉCNICO:
RAFAEL AMANCIO PIOTTO
CAU/SP: A-2658666
RRT: SI11722057R06CT001

	AÇO	POS	BIT mm	QUANT	COMPRIMENTO	
					UNIT	TOTAL
					cm	cm
B1	60A	1	5	4	191	764
	50A	2	10	2	183	366
	50A	3	10	2	185	370
B2	60A	1	5	4	191	764
	50A	2	10	2	183	366
	50A	3	10	2	185	370
B3	60A	1	5	4	191	764
	50A	2	10	2	183	366
	50A	3	10	2	185	370
B4	60A	1	5	4	191	764
	50A	2	10	2	183	366
	50A	3	10	2	185	370
B5	60A	1	5	4	191	764
	50A	2	10	2	183	366
	50A	3	10	2	185	370
B6	60A	1	5	4	191	764
	50A	2	10	2	183	366
	50A	3	10	2	185	370

RESUMO DE AÇO DOS BLOCOS			
AÇO	BIT	COMPR	PESO
		mm	m
60A	5	46	8
50A	10	47	30
Peso Total	60A =		8 kgf
Peso Total	50A =		30 kgf

AÇO		POS	BIT	QUANT	COMPRIMENTO	TOTAL
			mm		UNIT	cm
P1 Lance 1	50A	1	10	4	297	1188
	50A	2	10	4	100	320
	60A	3	5	28	81	2268
P2 Lance 1	50A	1	10	4	297	1188
	50A	2	10	4	100	400
	60A	3	5	28	81	2268
P3 Lance 1	50A	1	10	4	297	1188
	50A	2	10	4	100	400
	60A	3	5	28	81	2268
P4 Lance 1	50A	1	10	4	297	1188
	50A	2	10	4	100	400
	60A	3	5	28	81	2268
P5 Lance 1	50A	1	10	4	297	1188
	50A	2	10	4	100	400
	60A	3	5	28	81	2268
P6 Lance 1	50A	1	10	4	297	1188
	50A	2	10	4	100	400
	60A	3	5	28	81	2268

RESUMO DE AÇO DOS PILARES			
AÇO	BIT	COMPR	PESO
		mm	m
60A	5	133	21
50A	10	95	60
Peso Total	60A =		21 kgf
Peso Total	50A =		60 kgf

TABELA DE AÇO					
FUNDAÇÃO - ESTACAS TIPO BROCA DE 3 m					
AÇO	POSICÃO	BITOLA (mm)	QUANTIDADE	COMPRIMENTO	
				UNITÁRIO (cm)	TOTAL (m)
50A	1	8,0	30	320	96,00
60A	2	5,0	120	60	72,00
RESUMO AÇO CA-50 E CA-60					
AÇO	BITOLA (mm)	COMPRIMENTO (m)	PESO LINEAR (kg/m)	PESO (kg)	PESO - 10% (kg)
CA 60	5,0	72,00	0,1543	11,11	12,22
CA 50	8,0	96,00	0,9949	37,91	41,70
			QUANTIDADE TOTAL DE BARRAS		
			6 de 12 m		
			8 de 12 m		
			Kg		
			Kg		

PIOTTO
Arquitetura e Construção

PREFEITURA MUNICIPAL DE AGUDOS
PROJETO: CONSTRUÇÃO DA PRAÇA DO TURISTA

ASSUNTO: PLANTA BLOCOS/ESTACAS E PILARES QUIOSQUE 03

RESPONSÁVEL TÉCNICO:
RAFAEL AMANCIO PIOTTO

DESENHO:
NILTON CESAR MARQUES RIZZO

FOLHA:
02/04

REVISÃO: REV_A

DATA: 24/02/2022

ESCALA: 1:20 / 1:25