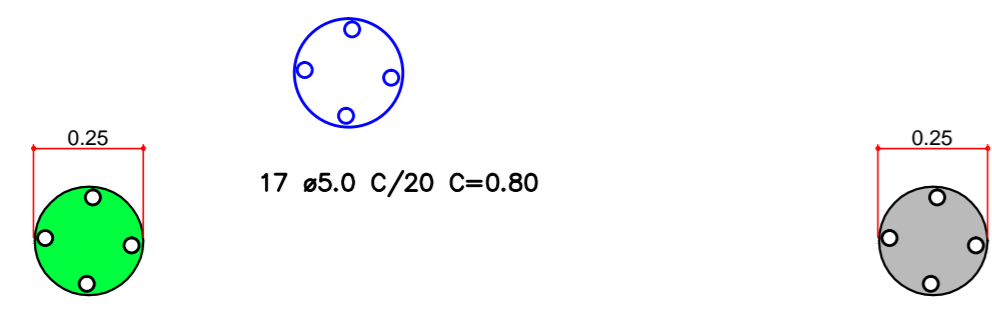
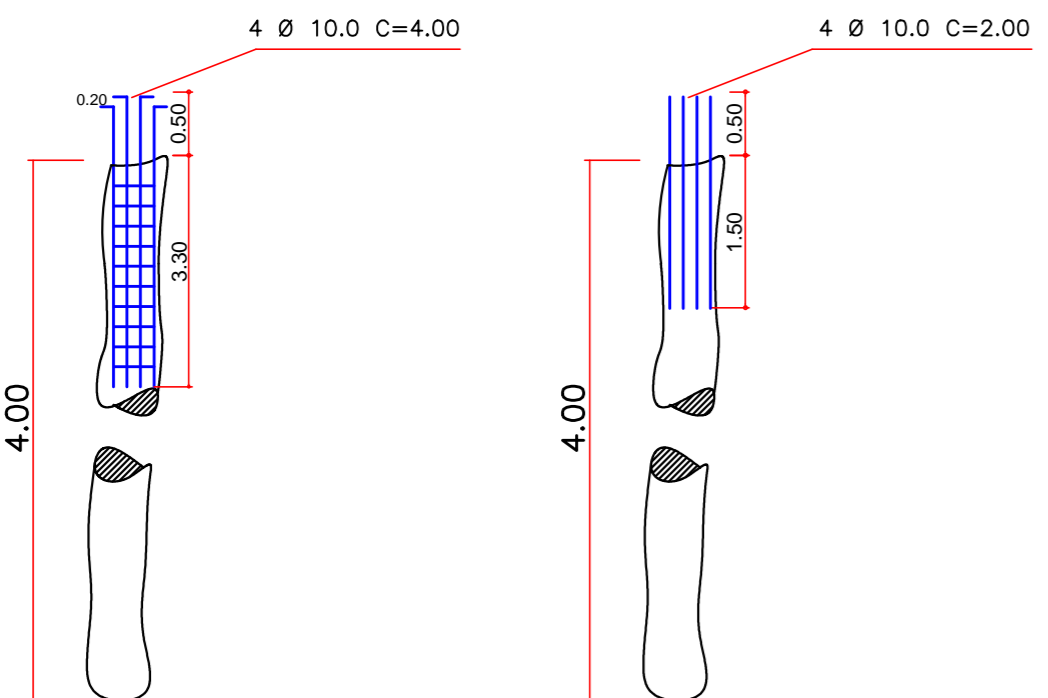


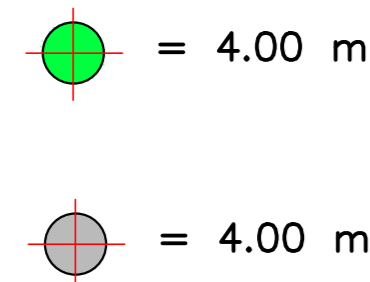
LOCAÇÃO DAS ESTACAS
escala 1:100



17 $\phi 5.0$ C/20 C=0.80



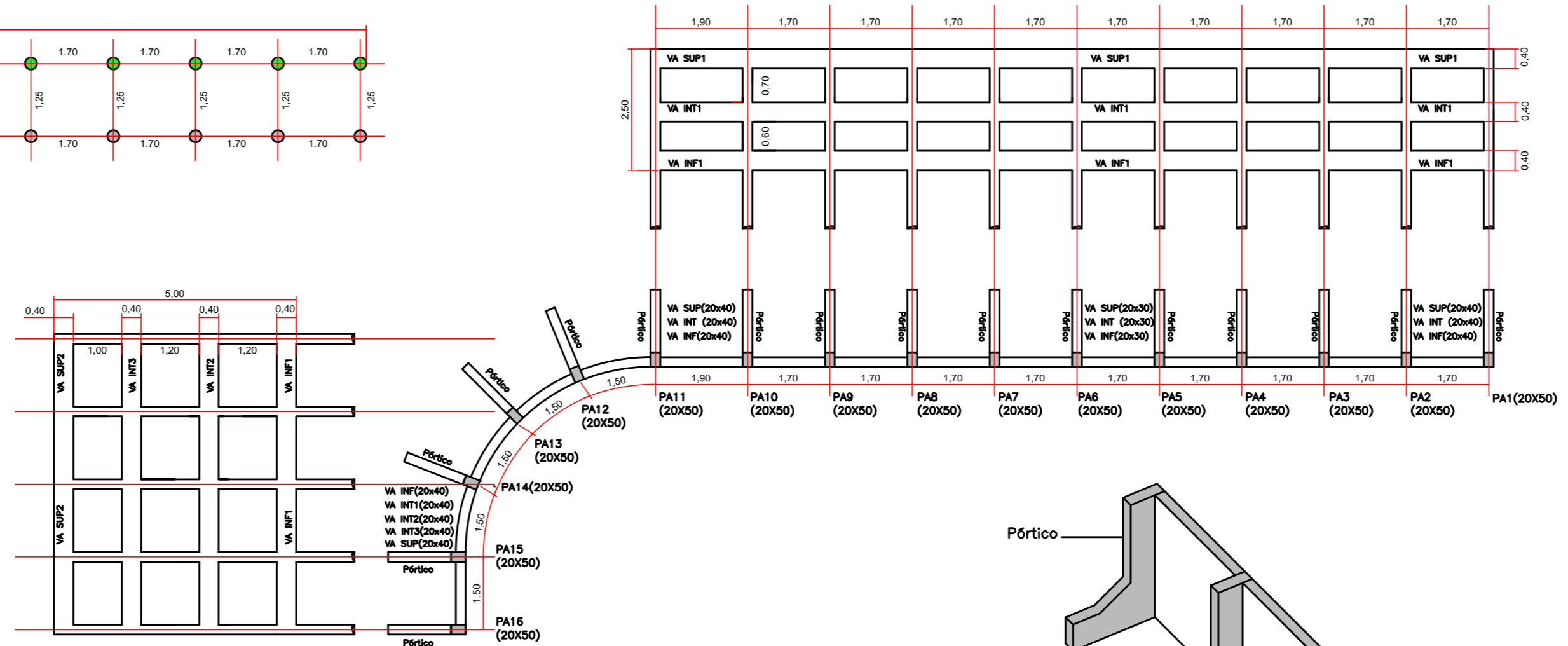
PROFUNDIDADE:



Resumo do aço p/ Estacas

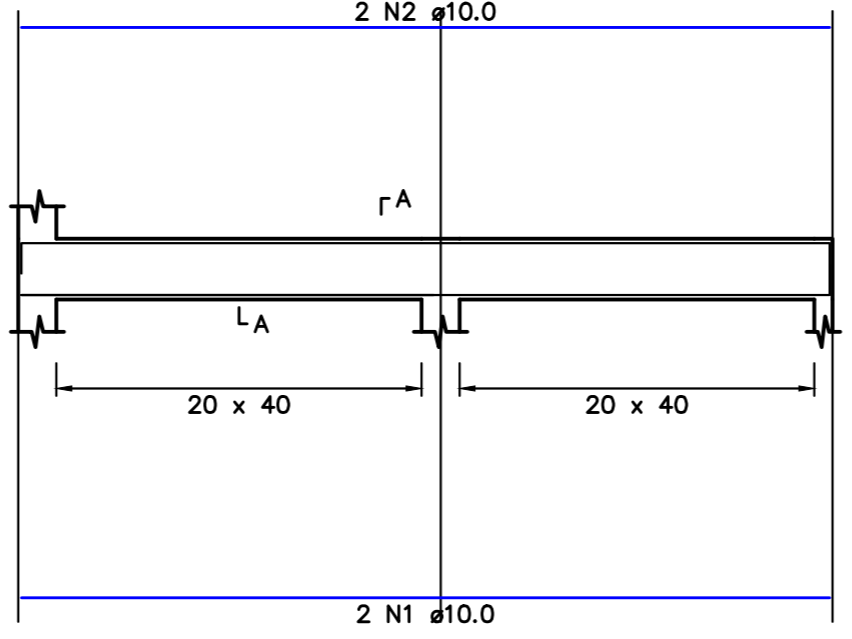
| AÇO | DIAM | C.TOTAL (m) | PESO (kg) |
|------|------|-------------|-----------|
| CA60 | 5.0 | 212 | 32,60 |
| CA50 | 10.0 | 384 | 236,92 |

Fck > 20 MPa

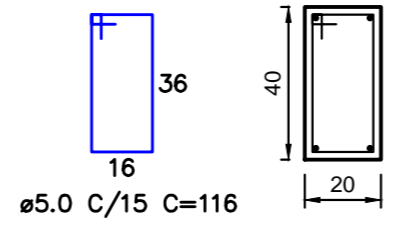


FORMA DAS VIGAS DO ARRIMO
escala 1:100

ARMAÇÃO DAS VIGAS (20X40):
VINF, VINT E VSUP
ESC 1:50



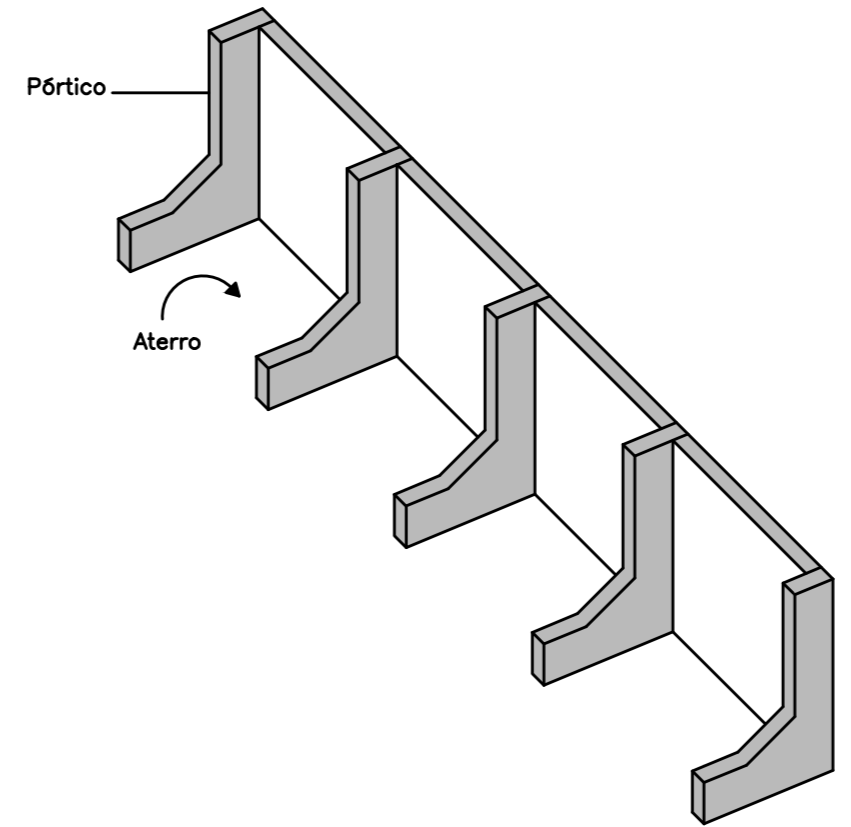
SEÇÃO A-A
ESC 1:20



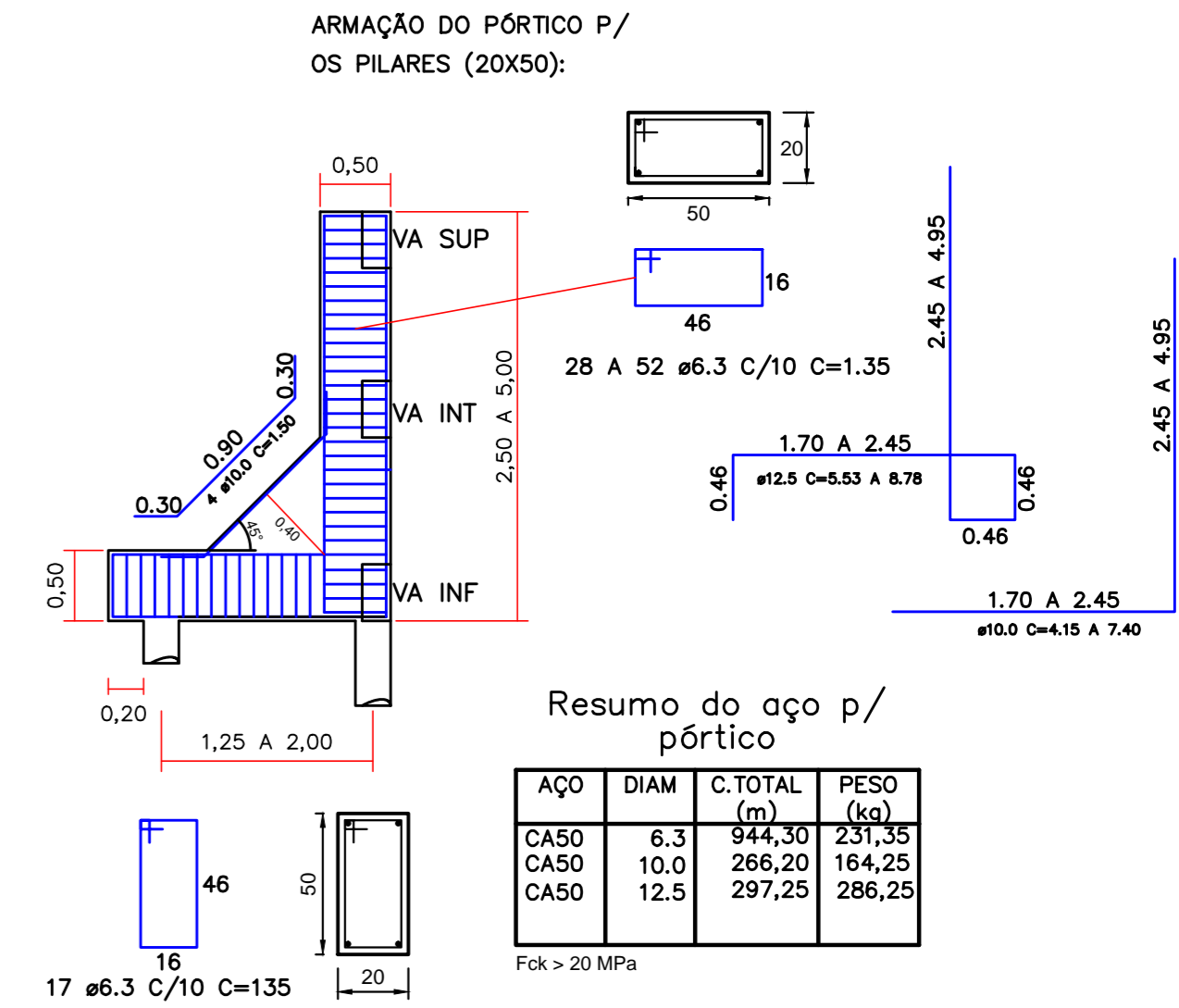
Resumo do aço p/ vigas

| AÇO | DIAM | C.TOTAL (m) | PESO (kg) |
|------|------|-------------|-----------|
| CA60 | 5.0 | 595,15 | 91,65 |
| CA50 | 10.0 | 307,60 | 189,77 |

Fck > 20 MPa



DETALHE: PÓRTICOS
escala 1:100



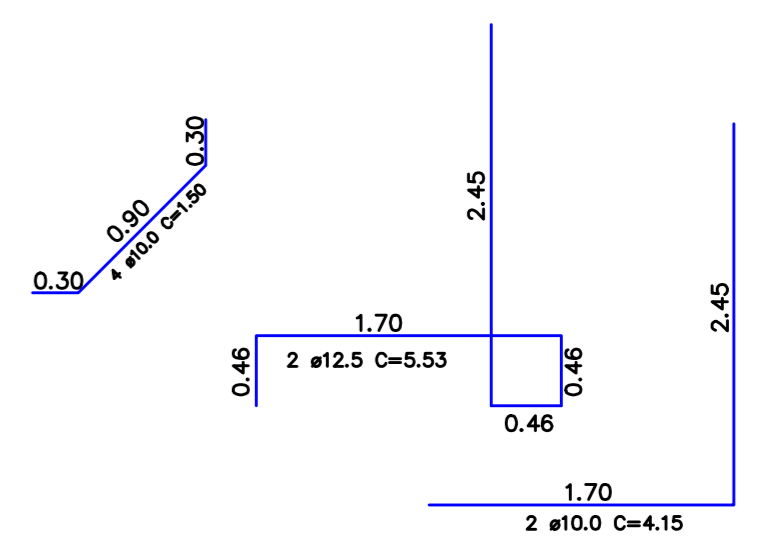
ARMAÇÃO DO PÓRTICO P/ OS PILARES (20X50):

Resumo do aço p/ pórtico

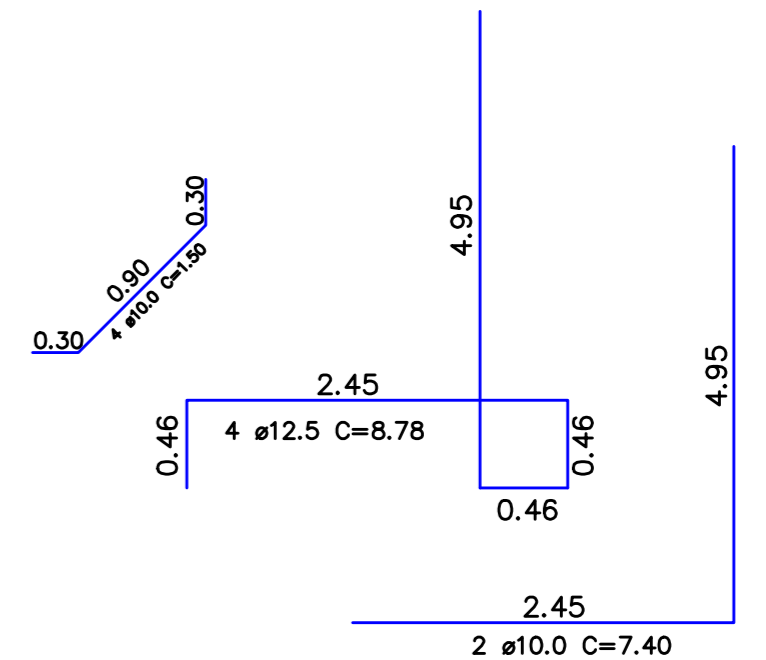
| AÇO | DIAM | C.TOTAL (m) | PESO (kg) |
|------|------|-------------|-----------|
| CA50 | 6.3 | 944,30 | 231,35 |
| CA50 | 10.0 | 266,20 | 164,25 |
| CA50 | 12.5 | 297,25 | 286,25 |

Fck > 20 MPa

PA1=PA2=PA3=PA4=PA5=PA6
=PA7=PA8=PA9=PA10=PA11



PA12=PA13=PA14=PA15=PA16



| | | | |
|---|---------|--|--------|
| | | PREFEITURA MUNICIPAL DE AGUDOS | |
| TÍTULO: Muro de arrimo - SENAI | | PREFEITO MUNICIPAL ALTAIR FRANCISCO SILVA | |
| ASSUNTO: Locação das estacas, Pórticos e Forma das vigas do arrimo | | RESPONSÁVEL TÉCNICO PAULO VICTOR ANTONIO FRANCO | |
| ENDEREÇO: Rua Ophelis de Almeida França c/ Av. Carlos Repke | | ENG. CIVIL - CREA 5069920475 | |
| ESCALA: | DATA: | REVISÃO: | FOLHA: |
| INDICADA | 01/2019 | R-01 | 2/2 |